



**AIT BRIDGE SYSTEMS**

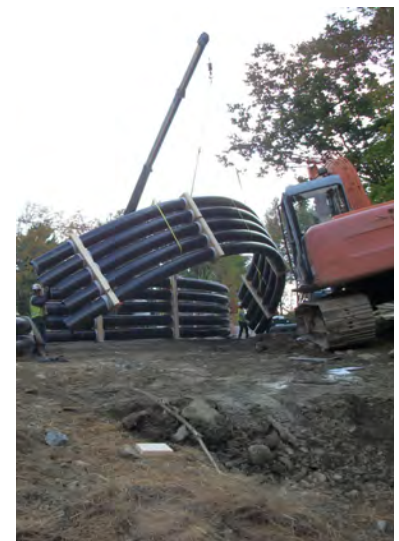
ADVANCED INFRASTRUCTURE TECHNOLOGIES

# Perkins Bridge Belfast, Maine



## Project Details

Year: 2010  
Span: 47'-7"  
Rise: 11'-0"  
Width: 45'  
Skew: 0°  
Arches: 16 carbon fiber tubes  
2'-11" spacing  
15" diameter  
Headwall: cast-in-place concrete and  
precast modular gravity walls



Owner: MaineDOT  
Engineer: Kleinfelder•SEA  
Augusta, ME  
Contractor: Stetson & Watson  
Pittsfield, ME

## Highlights

- Perkins Bridge was the first bridge constructed with 15" diameter tubes. With only 25% more carbon fiber and provided **twice the bending strength**.
- All sixteen arches were delivered to the jobsite in three packaged units and **quickly unloaded** with a lightweight boom truck and nylon lifting straps.
- No Stream impacts
- No maintenance to date